

DIST.

COUNTY

ROUTE

POST MILES
TOTAL PROJECT

SHEET
NO.

TOTAL
SHEETS

REGISTERED ENGINEER - CIVIL

PLANS APPROVAL DATE

The State of California or its officers or agents shall not be responsible for the accuracy or completeness of electronic copies of this plan sheet.

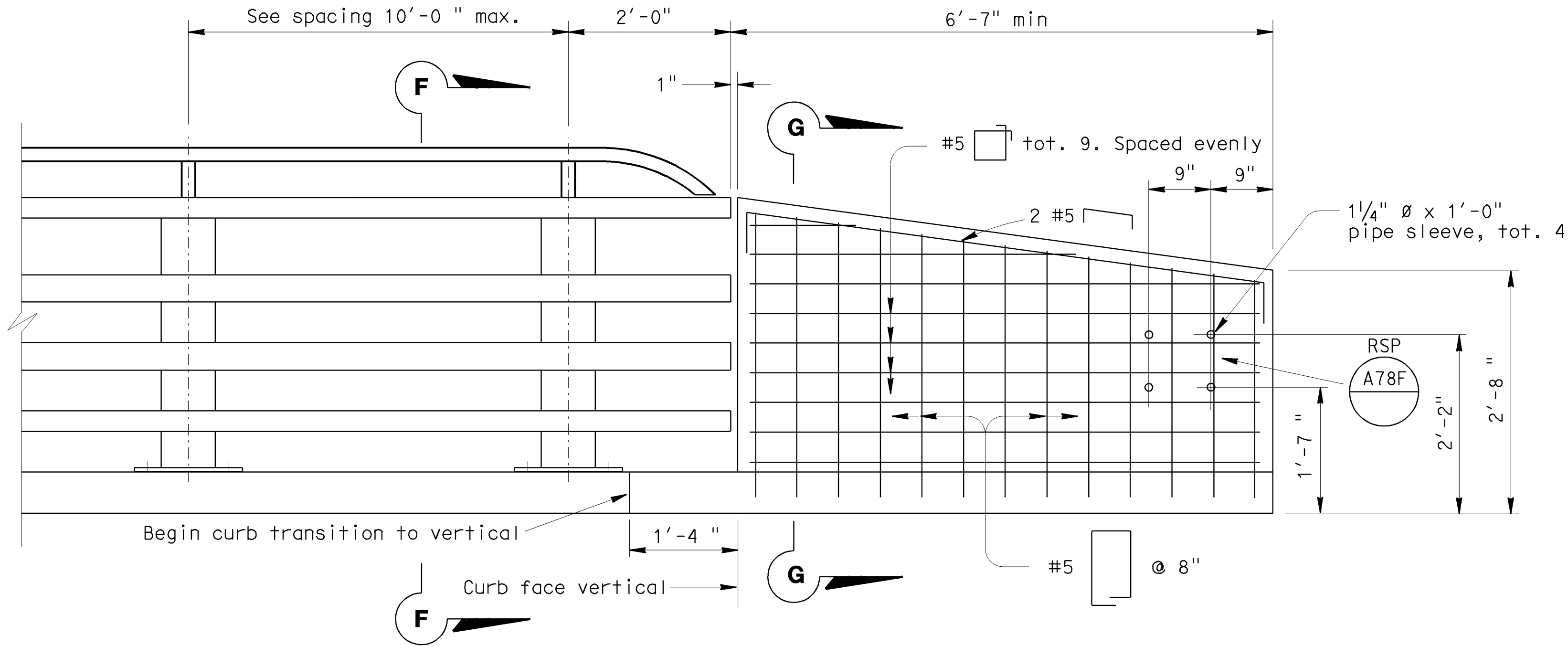
REGISTERED PROFESSIONAL ENGINEER

No.

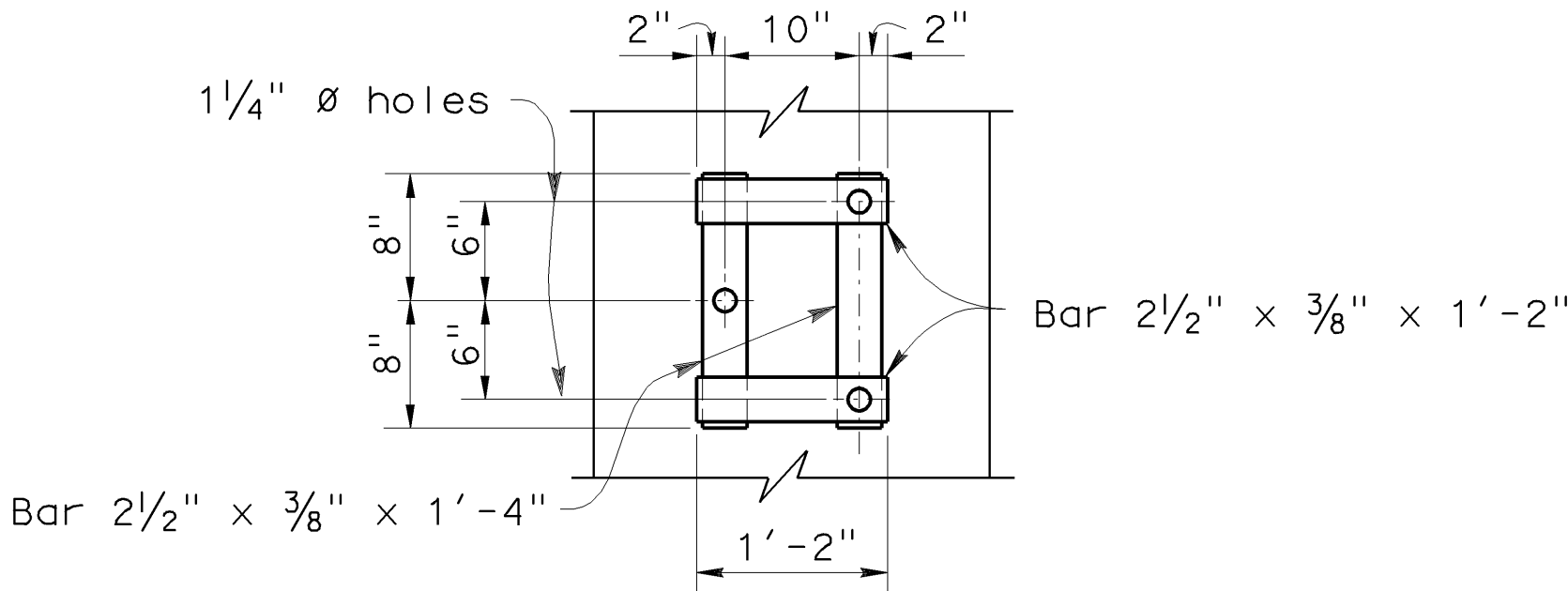
Exp.

CIVIL

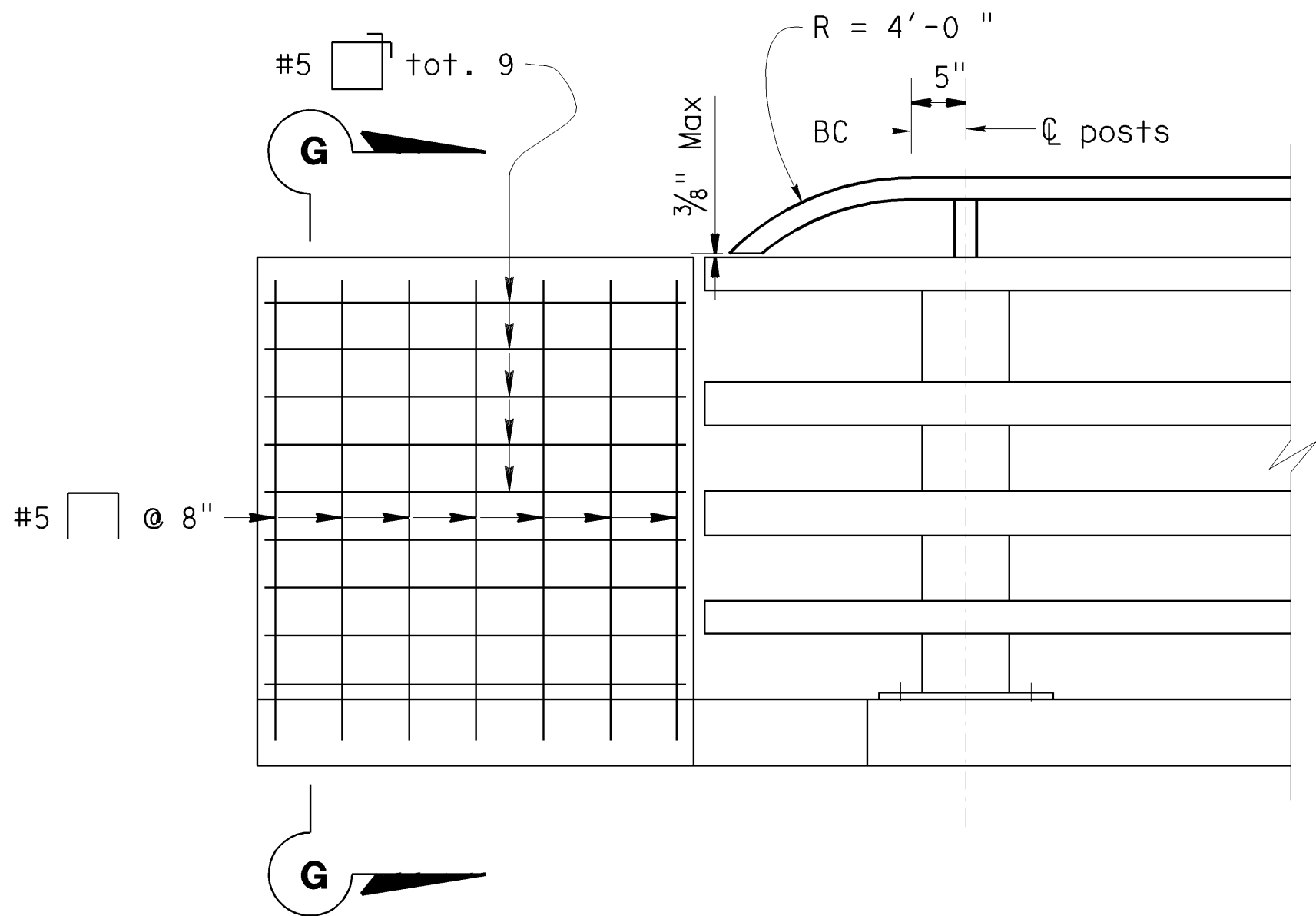
STATE OF CALIFORNIA



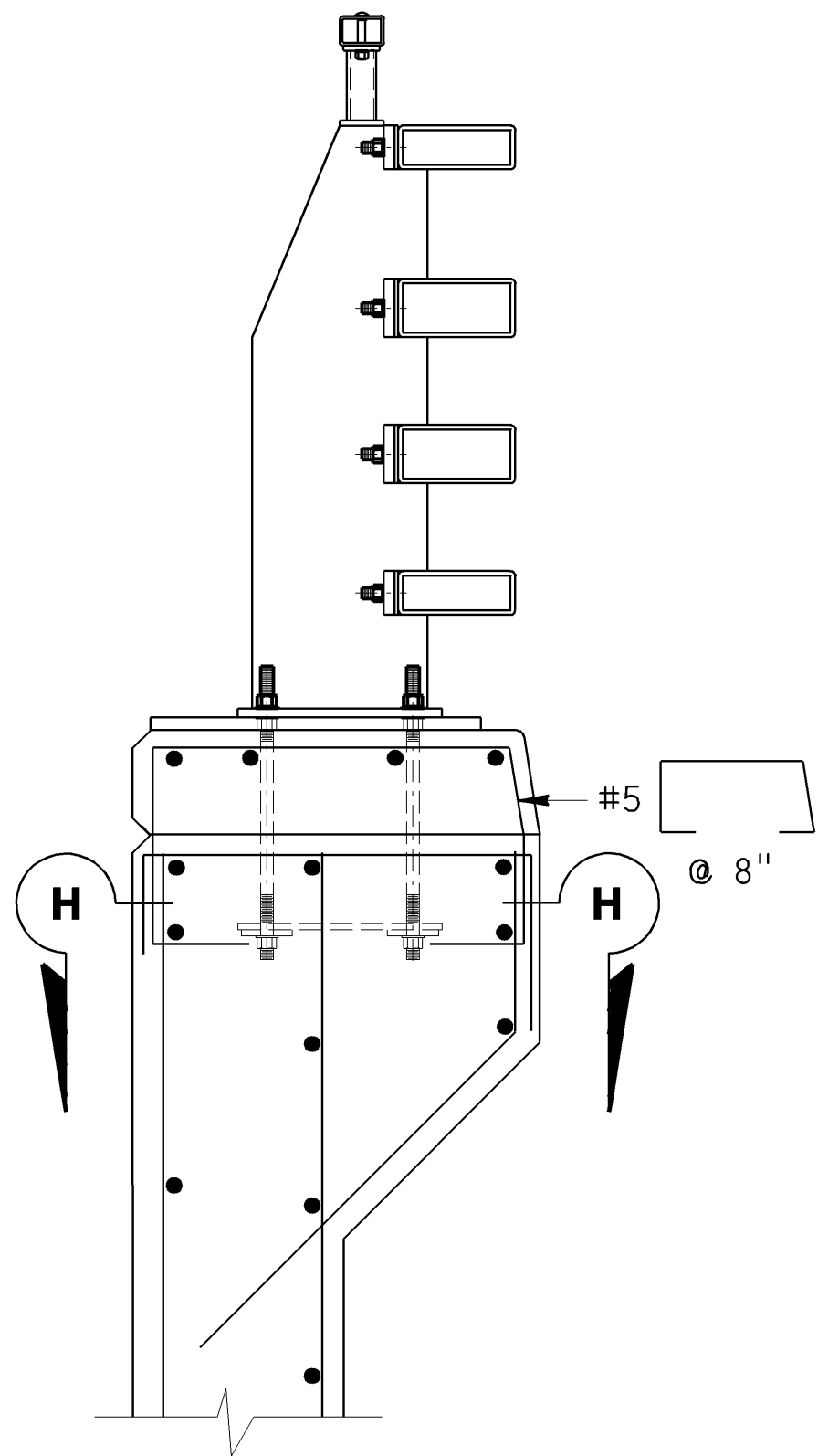
END OF RAILING ELEVATION
No scale



VIEW H-H
No scale

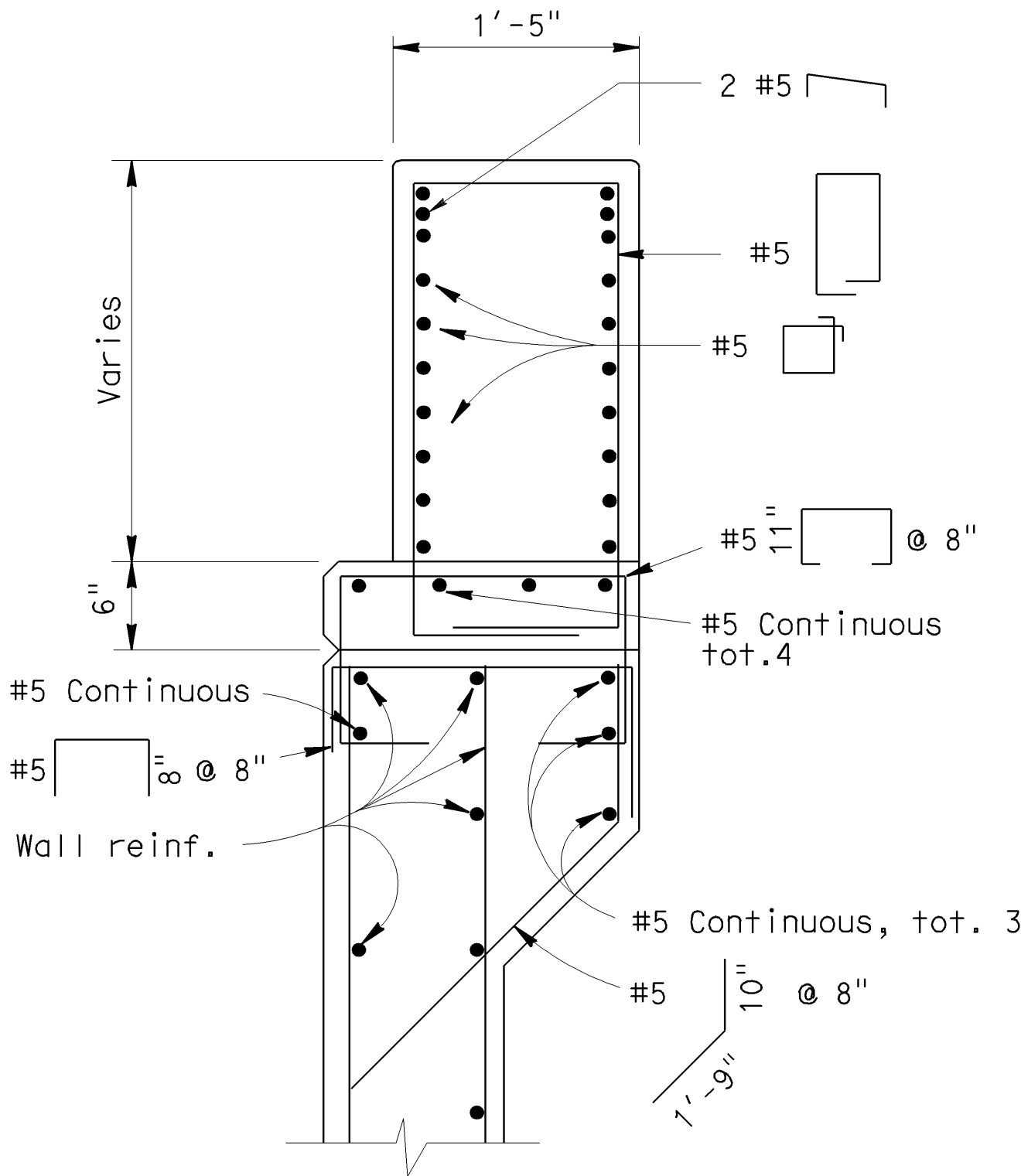


END OF RAILING ELEVATION
No scale



SECTION F-F
No scale

Reinf. same as for
Section G-G except as noted



SECTION G-G
No scale

GENERAL NOTES

- 1) All structural steel shall be galvanized after fabrication.
- 2) Proposed railing layout shown is approximate. Final layout shall be reviewed by engineer before fabrication.
- 3) Venting and pick-up holes in rails and sleeves shall be shown on fabricator's shop plans.
- 4) Anchor bolts may be tack welded (shop or field) to anchorage.
- 5) All rough edges on posts and rails shall be ground smooth.
- 6) Tubing shall be bent or fabricated to fit horizontal curve when curve is less than 900'-0" in radius.
- 7) After installation of rail, the exposed rail bolt threads shall be painted with two coats of zinc rich paint conforming to the requirement of section 75-1.05 galvanizing of The Standard Specifications.
- 8) The alternative welded splice may be used in lieu of The Standard Splice.
- 9) Each rail length shall be continuous over a minimum of two posts.
- 10) The fabricator shall check that the tubular sleeves splices conform to the dimensions indicated to assure proper clearance.
- 11) Except for expansion splices, not more than one splice shall be permitted per same side of post.
- 12) See contract plans for approach guardrail details.

STANDARD DRAWING

FILE NO. **xs16-205-3e**

APPROVED BY **T SATTER**
RESPONSIBLE TECHNICAL SPECIALIST
APPROVAL DATE **4-27-09**

RELEASED BY **ROBERTO LACALLE**
RESPONSIBLE OFFICE CHIEF
RELEASE DATE **4-27-09**

STATE OF CALIFORNIA
DEPARTMENT OF TRANSPORTATION

DIVISION OF ENGINEERING SERVICES

BRIDGE NO.
POST MILE

RAILING - STEEL TYPE ST-20S RAIL
DETAILS NO. 3

ORIGINAL SCALE IN INCHES
FOR REDUCED PLANS

0 1 2 3

CU
EA

DISREGARD PRINTS BEARING
EARLIER REVISION DATES

REVISION DATES (PRELIMINARY STAGE ONLY)

SHEET
3

OF
4

DATE PLOTTED => 06-MAY-2009
TIME PLOTTED => 07:48
USERNAME => rww
xs16-205-3e.dgn